

2017

COMMUNITY BENEFIT REPORT

For the fiscal year ending June 30, 2017

Published: September 2017



EL CAMINO HEALTHCARE DISTRICT



El Camino Hospital[®]
THE HOSPITAL OF SILICON VALLEY



2017

COMMUNITY BENEFIT REPORT

This report provides a recap of the Community Benefit Programs for El Camino Hospital and El Camino Healthcare District for fiscal year 2017.

Each organization has a separate Community Benefit Fund, sharing a common purpose: to improve the health and well-being of the people served. Both organizations have helped drive positive change for a diverse group of individuals and families throughout Santa Clara County. This report illustrates key issues facing underserved residents, strategies to address them, and the impact Community Benefit dollars have made in our community.

TABLE OF CONTENTS

District-funded Programs	6
District Community Benefit Total Fiscal Year 2017	21
Hospital-funded Programs	22
Hospital Community Benefit Total Fiscal Year 2017	35



Additional El Camino Hospital Information
The 2017 Community Benefit Plan, 2017 Community Benefit Report, and Community Health Needs Assessment are available at www.elcaminohospital.org/communitybenefit

Additional El Camino Healthcare District Information
The 2017 El Camino Healthcare District Community Benefit Plan and 2017 Community Benefit Report are available at www.elcaminohealthcaredistrict.org/communitybenefit



El Camino Hospital, Mountain View



El Camino Healthcare District Community Benefit Program

El Camino Healthcare District (ECHD) Community Benefit strives to meet the needs of underserved and vulnerable District individuals and families. The District works to address these needs by funding programs and services administered by nonprofits, school districts, and other community-based organizations.

- Program Grants
- Support Grants
- Sponsorships

All funds must be approved by the El Camino Healthcare District Board of Directors.

“We are a strong partner with organizations serving our community’s most vulnerable members. The needs are striking: About a quarter of our community lives in poverty, and almost 40 percent of children are eligible for free or reduced-price lunch at school. One in 10 lacks insurance, and homelessness is on the rise. The programs we fund improve health by combating significant hardships people face every day.”

Cecile Currier, Vice President, Corporate & Community Health Services, El Camino Hospital

El Camino Hospital Community Benefit Program

As an independent, nonprofit community hospital, El Camino Hospital (ECH) is committed to delivering quality care to everyone in our community. El Camino Hospital Community Benefit funds a variety of community-based programs in the hospital’s service area, including Campbell, Cupertino, Los Gatos, San Jose, Santa Clara, and Saratoga.

All funds must be approved by the El Camino Hospital Board of Directors.

ECH Community Benefit includes additional categories such as:

- Financial Assistance (Charity Care)
- Subsidized Health Services
- Training and Education for Health Professionals
- Unreimbursed Medi-Cal Costs
- Clinical Research
- Community Health Improvement Services
- Community Benefit Operations
- Grants and Sponsorships

How do we identify unmet health needs in our community?

El Camino Hospital conducts a Community Health Needs Assessment (CHNA) every three years to identify our community’s top unmet health needs. This robust process includes:

- Collecting and analyzing data on health conditions, such as obesity, diabetes, Alzheimer’s disease, mental health, and injuries from falls
- Capturing input from a wide spectrum of community members through:
 - » Interviews with local health experts
 - » Surveys with community stakeholders
 - » Focus groups representing issues facing the homeless, the medically underserved, those with mental health conditions, seniors, youth, immigrant children, and more
- Prioritizing health needs to address

El Camino Hospital’s CHNA builds on work done with health leaders in the Santa Clara County Community Benefit Coalition. This coalition includes El Camino Hospital and six other hospitals, the Santa Clara County Public Health Department, the Hospital Council of Northern and Central California, and the Palo Alto Medical Foundation.

The El Camino Hospital 2016 CHNA report is available online at www.elcaminohospital.org/communitybenefit



How do we decide which programs to fund?

El Camino Hospital and El Camino Healthcare District use the most current (2016) CHNA to guide the Community Benefit Grants Programs with the following priority area framework:



Annual Community Benefit Grant Application Process

January	February	March/April/May	June	July
Release of Grant Applications on Hospital and District websites	Applications due	Formal Application Review Process Presentation to the El Camino Hospital and El Camino Healthcare District's Community Benefit Advisory Councils for review Community Benefit Advisory Councils provide grant recommendations Development of Annual Community Benefit Plans	El Camino Hospital and El Camino Healthcare District Boards of Directors assess and approve the fiscal year Community Benefit Plans Applicants are notified of funding allocations	New Grant Programs begin (fiscal year is July 1 – June 30)

COMMUNITY BENEFIT GRANTS SUPPORT Three Health Priorities



These grants support efforts to prevent the onset of disease and improve access to primary care, chronic disease management, health and wellness education, and oral health.



These grants provide access to mental health services for youth and adults. Issues addressed include depression, anxiety, dementia, domestic violence, and substance use.



These grants promote the improvement of overall health in the community. Programs focus on issues such as access to transportation, falls prevention, free community screenings, and health education.

SANTA CLARA COUNTY HAS THE **5th LARGEST** ALZHEIMER'S DISEASE POPULATION IN CALIFORNIA

SOUTH ASIANS ARE **2 TIMES** MORE LIKELY TO HAVE HEART DISEASE THAN THE GENERAL POPULATION

15,000 LOW-INCOME SANTA CLARA COUNTY SCHOOL CHILDREN ARE ESTIMATED TO **NEED GLASSES**

36% OF ADULTS IN SANTA CLARA COUNTY **LACK DENTAL INSURANCE**

7,045 HOMELESS PEOPLE RESIDE IN OUR COUNTY

HYPERTENSION AFFECTS 27% OF ADULTS IN SANTA CLARA COUNTY

1 IN 3 ADULTS HAS PREDIABETES

El Camino Healthcare District 2017 Grant Recipients



\$6.4 million was invested to address unmet health needs and improve the health of people in the district

HEALTHY BODY PROGRAM PARTNERS

- 5210 Health Awareness Program
- BAWSI (Bay Area Women's Sports Initiative)
- Breathe California
- Community Services Agency, Mountain View
- Cupertino Union School District – School Nurse Program
- Day Worker Center of Mountain View
- Fresh Approach
- GoNoodle
- Healthier Kids Foundation
- Health Mobile
- Hope's Corner
- Living Classroom
- Lucile Packard Foundation for Children's Health – Teen Van
- MayView Community Health Center
- Medical Respite
- Mountain View Whisman School District – School Nurse Program
- New Directions
- Pathways Home Health & Hospice
- Playworks
- Sunnyvale School District – School Nurse Program
- Valley Health Center Sunnyvale
- Vision to Learn

HEALTHY MIND PROGRAM PARTNERS

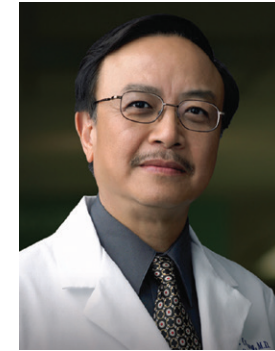
- Acknowledge Alliance
- Alzheimer's Association – Asian Dementia Initiative and Latino Family Connections
- Cancer CAREpoint
- CHAC (Community Health Awareness Council) at Sunnyvale School District
- Eating Disorders Resource Center
- International Association for Human Values
- Law Foundation of Silicon Valley
- Los Altos School District – Mental Health Counseling Program
- Momentum for Mental Health
- Mountain View Los Altos High School District – Mental Health Counseling Program
- National Alliance on Mental Illness (NAMI) Santa Clara County
- Prevention Partnership International
- Seniors Council

HEALTHY COMMUNITY PROGRAM PARTNERS

- American Heart Association Silicon Valley
- Chinese Health Initiative
- Family & Children's Services of Silicon Valley (a division of Caminar)
- Farewell to Falls
- Friends for Youth
- Health Library & Resource Center Mountain View
- Hypertension Initiative #KnowYourBloodPressure Public Awareness Campaign
- Maitri
- Matter of Balance
- Mountain View Police Department Youth Services Unit
- Next Door Solutions to Domestic Violence
- Rebuilding Together
- RoadRunners
- South Asian Heart Center
- Sunnyvale Community Services
- Working Partnerships USA
- YMCA Silicon Valley

Dear Community Members,

I am delighted to share with you my great pride and enthusiasm for all that the El Camino Healthcare District Community Benefit Program accomplished in FY2017. Our funding of primary and dental care services enabled thousands of underserved community members to get needed medical and dental care. The Hypertension Initiative, including the #KnowYourBloodPressure public awareness campaign, reached more than 100,000 community members with information about the too often unknown risks of high blood pressure and provided free screenings to hundreds of District residents. Our school nurse and mental health programs yielded huge dividends for school children and teens, with improved rates of follow-up appointments for children failing hearing and vision tests and access to counseling. These are just a few of the positive results our Community Benefit partners have achieved to improve the health and well-being of our community.



The rigorous process of the triennial Community Health Needs Assessment identifies unmet health needs in our community and sets priorities for the El Camino Healthcare District Community Benefit Grants Program. Our three priority areas, new in FY17, are Healthy Body, Healthy Mind, and Healthy Community. We are eager to continue tackling these priorities. I encourage you to review this report to better understand both the health needs in our community, and the important strategies and programs we are supporting to address them.

In this time of great uncertainty in our healthcare delivery system, our community's most vulnerable members deserve security, access to health services, and peace of mind more than ever. Our Community Benefit Grants Program addresses this overarching need in multiple ways. I am honored to be a part of this effort and look forward to another year of positive change.

Sincerely,

Peter C. Fung, MD, MS, FACP, FAAN, FAHA
FY17 Chair, Board of Directors, El Camino Healthcare District



EL CAMINO HEALTHCARE DISTRICT



Tackling Chronic Disease and Preventable Illness



Working to prevent and detect diseases early can make a significant and even lifesaving difference in our community's health. We support a wide range of programs that deliver valuable education, provide critical screenings, and empower people to manage their health proactively.

We're providing unique services to address health issues threatening our multicultural community

Some cultural behaviors may increase the risk for health conditions such as diabetes, heart disease, and some cancers. We are raising awareness and lowering risk with targeted programs that provide education, training, support, and resources tailored appropriately to these audiences.

The **Chinese Health Initiative** continued raising awareness of health issues affecting the Chinese community, with a focus this year on combating hypertension.

By combining research, specialized screenings, and lifestyle coaching, the **South Asian Heart Center** worked to reduce this community's particularly high risk of cardiovascular disease and diabetes.

40 COMMUNITY EVENTS
HELPED RAISE
AWARENESS

of hypertension in the
Chinese community

64%
IMPROVED cholesterol ratio
among South Asian Heart Center
participants since program inception

Hypertension is widespread in Santa Clara County

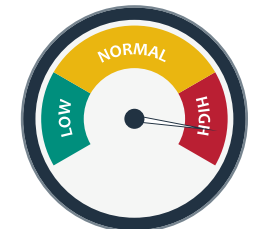
Hypertension is a "silent killer" that causes damage to the heart and blood vessels over time. Many in our community have no idea their blood pressure is elevated, putting them at risk for heart attacks and strokes.

We're raising awareness — and lowering blood pressure

Because hypertension is often silent, we spoke loudly on the issue to help alert our community about the dangers of untreated high blood pressure. The Hypertension Initiative addressed the problem head-on with a concentrated public service campaign.

The El Camino Healthcare District, in partnership with the **American Heart Association Silicon Valley**, launched a public awareness program, **Know Your Blood Pressure**. This initiative also funded blood pressure screenings and free hypertension management classes for community members. Screening opportunities are listed at www.KnowYourBP.org

The public awareness campaign reached more than
100,000 district residents



27%
OF SANTA CLARA COUNTY
ADULTS HAVE HYPERTENSION



We're helping people navigate information about crucial health decisions

For many, the **Health Library & Resource Center in Mountain View** is a vital, no-cost resource for assistance with advanced healthcare directives, Medicare forms, and understanding other health-related information that is challenging to patients and their families. The library also provides elder care consults and referrals for family caregivers.

5,700
PEOPLE ASSISTED
by phone or in person

Ensuring Access to Essential Care

There are many reasons people are unable to get the healthcare they need. Not having a “medical home” is a common challenge. Other barriers to care include homelessness, language, lack of insurance, and poor health literacy.

We're filling the gap with convenient, free care, where and when it's needed

Our Community Benefit support to **Valley Health Center Sunnyvale** provided both dental and medical care — doubling the number of evening hours for Express Care services to make it even more convenient. This resulted in 2,800 services to nearly 1,400 people. More evening hours were also added for dental services, providing more than 3,100 encounters to nearly 950 underserved community members.

Health Mobile provided no-cost dental services to low-income families and homeless individuals at places they frequent, such as a community services agency and safety net clinic.



6,280 DENTAL SERVICES provided by Valley Health Center Sunnyvale and Health Mobile



We're providing a “medical home” for those who need support

MayView Community Health Center provided an accessible and affordable “medical home” for many in our community who might otherwise have nowhere to go. This past year, the center served 2,400 patients and performed more than 5,700 services. Clients received comprehensive care, wellness services, and ongoing medical oversight, regardless of their ability to pay.

“El Camino Healthcare District has supported MayView in caring for our uninsured patients in the district. These community members receive preventive services, integrated behavioral health, chronic disease management, immunizations and care when they're sick. Without this program, many people would not have a medical home. Besides funding, they are MayView's vital thought partner and bridge to other community resources.”

Kelvin Quan, JD EdD MPH, President & CEO
MayView Community Health Center

Care When You Leave the Hospital

For the homeless and seniors living alone, discharge after hospitalization poses special risks. Meeting their basic needs requires social services and, in some cases, providing a safe place to heal to avoid relapse or complications. In the long term, many vulnerable people need help stabilizing their health — and their lives.

With our support, case management, physical and occupational therapy, and other crucial services reached those in need

Medical Respite provided a room, medical care, counseling, meals, and case management for homeless people post-hospitalization.



884
HOSPITAL DAYS AVOIDED

New Directions provided critical help to homeless and housing-insecure or unstable people who frequently visit the hospital. The program provided access to healthcare, housing, mental health treatment, and other essential services. In doing so, New Directions helped break the cycle of at-risk people who frequently use the hospital and promoted broader life stability.

Thanks to **Pathways Home Health & Hospice**, low-income community members lacking adequate insurance received nursing visits, physical, occupational, and speech therapy at home.

The Senior Intensive Case Management Program at the **Community Services Agency Mountain View Los Altos** provided home-based clinical support to ensure older adults can recover after hospitalization and live independently in their homes.



HOMELESS IN OUR AREA

31% have a physical disability

27% have a chronic condition

38% have psychiatric or emotional conditions



We're helping cancer patients with support during treatment and recovery

Cancer survivors do better when they are supported physically, mentally, and emotionally.

Cancer CAREpoint provided effective tools to transition from being a patient to a survivor through counseling and integrative healing methods.

Nurturing Children at School



Children spend a lot of time in school, and that provides a perfect platform to instill healthy habits. School-based programs that promote physical, mental, and emotional health reach a large number of young people and families in one familiar, trusted setting.

For many youngsters, the school nurse is the only healthcare professional they ever see

Funding School Nurses

- Cupertino Union School District
- Mountain View Whisman School District
- Sunnyvale School District

Many schools have a large percentage of socioeconomically disadvantaged students. Community Benefit funds significantly improved the ratio of nurses to students in the El Camino Healthcare District. School nurses went far beyond treating skinned knees, often filling the gap of care for children who are disabled, medically fragile, or suffering from chronic conditions, while also conducting vision, dental, and hearing screenings. For children who failed health screenings, nurses provided a critical function in following up with families to be certain their child saw a doctor. To ensure there's timely help in every school, nurses trained staff on EpiPen® and CPR administration.



24 schools
SERVED ACROSS
3 districts

We invested in mobile services — bringing care where it's needed

An estimated 15,000 school children in Santa Clara County need glasses to read a book or see the blackboard but lack access to an optometrist or the means to purchase glasses. The **Vision to Learn** mobile van offered free eye exams at local schools and free eyeglasses for children who needed them.

The **Lucile Packard Foundation for Children's Health Teen Van** offered comprehensive healthcare on-site for underserved youth in the **Mountain View Los Altos Union High School District**. Nearly 70 percent of teens using the van relied on this service for ongoing care.



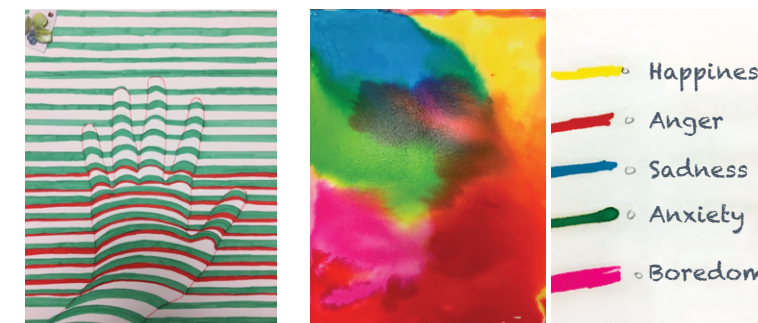
We fund counselors and programs that teach social/emotional skills and resiliency

School-based Counseling

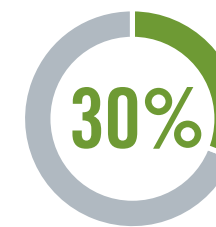
To help young people dealing with mental health conditions, including those recovering from traumatic experiences or living through turmoil at home, **CHAC (Community Health Awareness Council)** provided mental health counseling in the **Sunnyvale School District**. CHAC also provided group sessions on resiliency and life skills at 23 elementary schools in the **Los Altos, Mountain View Whisman** and **Sunnyvale School Districts**.

We funded licensed therapists to serve middle and high school students in the **Los Altos School District** and **Mountain View Los Altos High School District**. These therapists provided individual and family therapy, case management, and crisis intervention for at-risk youth.

Samples of Student Art Therapy



Created by participants of the Los Altos School District Counseling Program



ONLY 30% OF YOUTH with mental health needs are getting treatment

Fremont High School students were energized and inspired by the breathing and stretching techniques offered by the **International Association for Human Values Youth Empowerment Seminar (YES!)** which was designed to help them cope with negative emotions, impulse control, and conflict resolution.

Psychological resilience makes all the difference for youth dealing with difficult situations. **Acknowledge Alliance's** Social Emotional Learning Lessons is an evidence-based program to help children build coping skills, which was provided in the **Sunnyvale School District**. The program also provided monthly resiliency support groups for teachers.



With our help, children increased their activity levels and raised their nutrition IQ

Physical Activity and Nutrition

By restructuring recess activities and teaching kids how to resolve conflicts, **Playworks** reduced bullying and increased safe, active play in 11 schools in the **Mountain View Whisman** and **Sunnyvale School Districts**.

Thousands of fidgety youngsters were calmed and captivated by **GoNoodle's** engaging and educational classroom videos and web-based games in 25 schools in the El Camino Healthcare District. "Brain breaks" helped children focus, and research showed this program improved math and reading skills.

More than 7,000 school children learned healthier habits through the **5210 Health Awareness Program** in **Sunnyvale** and **Cupertino Union School Districts**.

- 5 or more fruits and vegetables a day
- 2 hours or less of recreational screen time
- At least 1 hour a day of physical activity
- 0 sweetened beverages

Funded programs made positive strides



Increased Activity



Healthier Habits



Improved Reading & Math Skills



Reduced Bullying



The innovative **Living Classroom** school garden program paired science and nutrition education with hands-on experience in gardening and harvesting the vegetables students grew. Students prepared healthy plant-based recipes.

Local collegiate athletes volunteered with **BAWSI (Bay Area Women's Sports Initiative)** to lead underserved elementary school girls in fun activities to boost fitness and self-esteem.

The **Healthier Kids Foundation's** "10 Steps to a Healthier You!" conducted workshops for parents with tips and tools to foster healthy family lifestyles and help their children develop nutritious eating habits.

Supporting Youth Outside of School

We're funding programs that support youth physically, emotionally, and socially

Community Benefit supported action-packed camps through the **Mountain View Police Department Youth Services Unit** and **YMCA Silicon Valley**. These camps gave low-income children a chance to make new friends, learn about nutrition, and stay active during the summer.

The right mentor can change a young person's life by building self-esteem, strengthening resiliency and modeling positive behaviors. **Friends for Youth** paired children with carefully recruited adult role models.

Helping People Make Healthy Food Choices



Making healthy choices is a challenge for many families in our area. Obesity and poor nutrition are widespread, largely due to lack of access to fresh produce, information about wholesome foods, or the money to buy better options.

We're working to make the healthy choice the easy choice

Fresh Approach taught nutrition and healthy meal planning, and provided BMI screenings, goal setting for participants' health monitoring, and vouchers for easy-to-access fresh produce. Overall, 39 percent of all VeggieRx class participants lost weight during the program.

Hope's Corner provided 300 weekly nutritious breakfasts and to-go lunches to homeless and low-income community members. The community could also access nutrition information, flu shots, and consultations with a social worker.

The **Day Worker Center of Mountain View** served wholesome breakfasts and lunches, and offered exercise classes and bilingual tips for better nutrition. These services helped address diabetes and obesity in the low-income population.

The U.S. Department of Agriculture defines **FOOD INSECURITY** as a lack of consistent access to enough food for an active, healthy life.



20% of children in Santa Clara County live in food-insecure homes



31% of Santa Clara County households are food-insecure



THANKS TO THESE PROGRAMS

Helping Older Adults Live Fuller Lives



Helping seniors stay healthy, safe, and enjoy the best possible quality of life takes a multipronged approach. This means providing help with daily living, companionship, falls prevention, and support to caregivers.

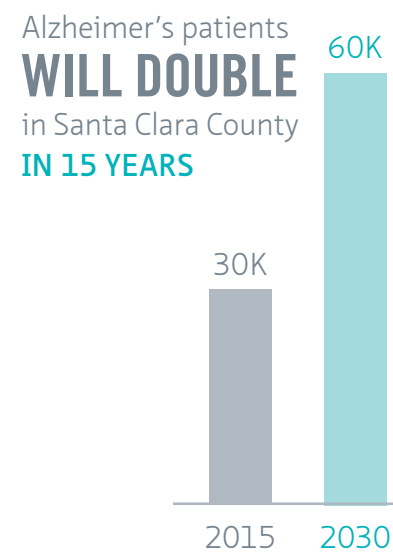
Support for seniors and their caregivers

The **Asian Dementia Initiative** provided by the **Alzheimer's Association** worked to reduce social stigma about the disease in the Chinese and Korean communities through educational forums and support groups. Caregivers also received one-on-one consultations.

A higher rate of diabetes and vascular disease puts Latinos at risk for Alzheimer's disease and dementia. The **Alzheimer's Association's Latino Family Connections** gave culturally sensitive educational presentations in Spanish to caregivers and families. Topics included symptoms, caregiver tips, and the need to overcome the social stigma that accompanies memory loss.

Breathe California helped underserved and isolated seniors breathe easier with services that included education on lung disease, indoor air quality assessments, smoking cessation consultations, breathing exercises, and caregiver training.

To provide lonely, isolated elders with companionship, **Seniors Council** arranged for peer volunteer companions to visit homebound and disabled seniors.



We're providing transportation to help older adults stay active and independent

Giving up driving shouldn't mean losing your independence. **RoadRunners** transportation service gave local seniors and disabled people door-to-door rides to the doctor, dentist, and other important appointments or errands. To accommodate the growing need for rides, RoadRunners partnered with Lyft to expand the number of rides they could provide.

"The RoadRunners are an invaluable resource for my mom and me. My mom is a widow, has moderate Alzheimer's disease, and can no longer drive. With the help they provide, my mom can keep her appointments.... The staff is great at keeping me informed of situations that may come up with my mom."

Daughter of RoadRunners client

Falls are the #1 cause of fatal and nonfatal injuries in seniors



For older adults, falls are the most common cause of trauma-related hospital admissions and the leading cause of fatal injury. Fall-related injuries, such as hip fractures, may put an end to living at home, and fear of falling is common among senior citizens.

An older adult **DIES FROM A FALL** every 19 minutes in the U.S.

We're helping seniors avoid falls and make their homes safer

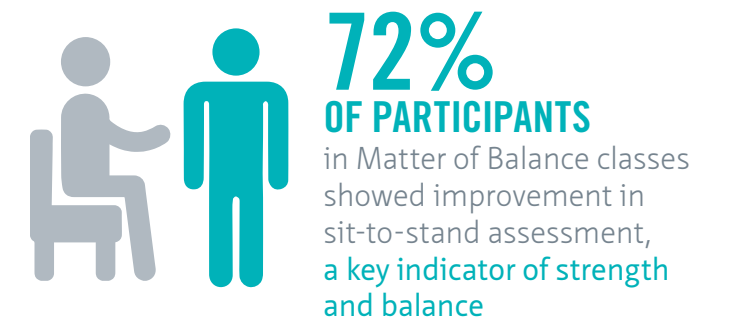
Older adults received personal in-home visits from occupational therapists who performed home safety assessments, made recommendations, and learned exercises to improve strength and balance through the **Farewell to Falls** program. This program also trained local firefighters and responders to treat fall victims.

> 57 seniors benefited from two home safety visits

Injuries from falls can cost seniors their independence. **Rebuilding Together** provided in-home falls risk assessments for low-income community members and followed up with free, safety-enhancing repairs and modifications.

> 14 older adults received help fall-proofing their homes

For aging community members, **Matter of Balance** classes are a matter of personal safety. More than 100 people benefited from this evidence-based program designed to reduce their fear of falling and increase their confidence in being physically active.



Caring for Our Community's Most Vulnerable



Help is available for vulnerable people in our community, but many lack awareness about the options and may not have the skills to access them. Our funding helps people in need connect with and navigate medical and social services to improve their health and their lives.

We're addressing basic needs — food, shelter, medical bills

At-risk community members in Sunnyvale received assistance navigating social benefits through **Sunnyvale Community Services'** Case Management Program. This included referrals and counseling for health and medical care, nutrition programs, affordable housing, and other basic needs influencing self-sufficiency.

With rents continuing to climb, families may sacrifice food, healthcare, and other essentials to keep a roof over their head. Through **Sunnyvale Community Services'** Emergency Assistance Program, vulnerable community members were able to access nutritious food and financial assistance for medically related bills.

Community Benefit funds helped **Working Partnerships USA** assist underserved families who still lacked insurance to find and enroll in health coverage.

We're reaching out to troubled teens and their parents

Getting help for a troubled teen can be especially hard for low-income families. **Prevention Partnership International** tailored the evidence-based Celebrating Families!™ program for the Latino community to support adolescents dealing with behavioral health issues such as substance use and mental health conditions.

4,000
uninsured residents of
Mountain View and Sunnyvale
**CONSULTED ON HEALTH
COVERAGE OPTIONS**

[Working Partnerships USA]

Mental health conditions call for compassionate care and resources



60% of adults with mental illness didn't receive mental health services in the previous year

We're stepping in with access, advocacy, and support

Uninsured people with mental conditions found help and hope, thanks to **Momentum for Mental Health**. Patients received psychiatric evaluation and treatment, counseling, and medication management.

The **Law Foundation of Silicon Valley** provided legal services to assist people with mental health conditions to navigate challenges such as evictions and denial of public benefits. The program also educated clinics, community service agencies, and other organizations.

The **Eating Disorders Resource Center** provided support to those suffering from anorexia, bulimia, and related conditions. The center also educated physicians on identifying potential eating disorder patients.

The **National Alliance on Mental Illness (NAMI) Santa Clara County** provided a peer mentoring program for adults from all walks of life suffering with bipolar, schizophrenia, and other severe mental health conditions. The program countered isolation and established connections to the wider community.

Survey results from NAMI program participants



We're stepping up for the victims of domestic violence

Due to cultural and language barriers, domestic violence survivors from South Asian countries are often reluctant to seek help. **Maitri** empowered these women by explaining their legal rights, and offering safety planning, peer counseling, and even legal representation.

Next Door Solutions to Domestic Violence helped survivors through services such as support groups and safety planning.



1 IN 8
Santa Clara County residents has been physically abused by a partner at least once

Domestic violence victims found a safety net of support through **Family & Children Services of Silicon Valley**. Survivors received professional counseling, case management, and advocacy, available in English and Spanish.

“Thank you for helping me. I never thought I would be in this situation. You were very kind and patient. I would be homeless without your assistance. You helped me keep my home. I really appreciate your help.”

61-year-old senior client with 24-year-old disabled son, Sunnyvale Community Services

“The clinic saved me from becoming depressed and probably suicidal. The people working there have a true beautiful heart and beautiful mind to help others. I felt so supported at the time of my worst panic attacks. I owe them for the service they provided. Thank you from the bottom of my heart!”

Program participant, Momentum for Mental Health

“It is truly amazing to have the physician and his Teen Van staff visit our school monthly, providing students access to a medical doctor, a nutritionist, and other services. Many students also have severe trust issues as a result of repeated disappointments from the adults in their lives. The connection with a trusted adult means almost as much as the medical care they receive through the Teen Health Van.”

Bill Pierce, Principal, Alta Vista High School, where the Teen Health Van visits monthly

“The Cupertino Union School District is extremely grateful for El Camino Healthcare District’s funding of our nursing program. This helps us support those in our community who need resources and access to basic healthcare services. The result is better health for our students, which means better attendance, and therefore better learning opportunities. Our entire community is healthier when our students achieve success.”

Debbie Textor, Executive Director of Pupil Services, Cupertino Union School District

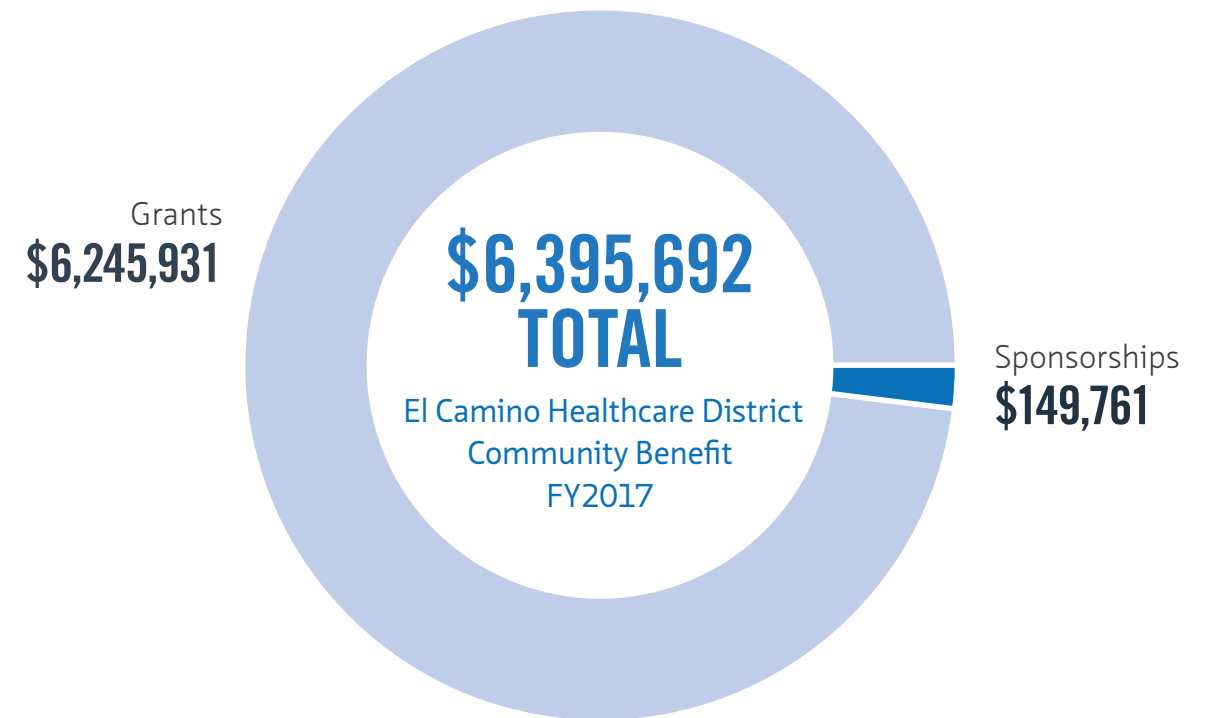
“I have been trying to eat healthy to drop my blood pressure. I was unaware of all the sodium in processed foods ... and believed a lot of false information on products. It doesn’t cost a lot to eat healthy, natural veggies, and once I quit buying processed foods, my health began improving.”

Participant, Fresh Approach VeggieRx class



EL CAMINO HEALTHCARE DISTRICT

Financial Accounting



El Camino Healthcare District Fiscal Year 2017 Sponsorships Recipients

- | | |
|--|---|
| Adolescent Counseling Services | Healthier Kids Foundation |
| Alzheimer’s Association | HomeFirst – Sunnyvale Cold Weather Shelter |
| American Diabetes Association | Hospice of the Valley |
| American Red Cross | Mentor Tutor Connection |
| BAWSI (Bay Area Women’s Sports Initiative) | Pacific Stroke Association |
| City of Mountain View – Senior Health Events | Pathways Home Health & Hospice |
| City of Sunnyvale – Senior Health Events | Rebuilding Together Silicon Valley |
| Community Services Agency Mountain View | Sunnyvale PAL (Police Athletics League) – Kick, Lead, Dream Soccer Camp |
| Day Worker Center of Mountain View | Sunnyvale Rotary Foundation |
| Family & Children Services of Silicon Valley | Unity Care |
| Foundation for Mental Health | Valley Medical Center Foundation |



El Camino Hospital 2017 Grant Recipients

\$3.1 million was invested to address unmet health needs and improve the health of people in our community

HEALTHY BODY PROGRAM PARTNERS

5210 Health Awareness Program
 BAWSI (Bay Area Women's Sports Initiative)
 Breathe California
 Campbell Union School District – School Nurse Program
 Cancer CAREpoint
 Challenge Diabetes Program
 Cristo Rey Network
 Cupertino Union School District – School Nurse Program
 Gardner Family Health Network
 GoNoodle
 Medical Respite
 Playworks
 Santa Clara County Office of Education – Early Head Start
 The Superior Court of the County of Santa Clara – Foster Care Orthodontic Program
 Vision to Learn

HEALTHY MIND PROGRAM PARTNERS

Almaden Valley Counseling Service
 Asian Americans for Community Involvement (AACI)
 Cupertino Union School District – Mental Health Counseling Program
 linkAges
 Meet and Move
 Momentum for Mental Health
 Peninsula HealthCare Connection
 Santa Clara Unified School District – Mental Health Counseling Program
 Uplift Family Services at Campbell Union High School District

HEALTHY COMMUNITY PROGRAM PARTNERS

Chinese Health Initiative
 Falls Prevention of Santa Clara County
 GreatNonprofits
 Health Library & Resource Center Los Gatos
 Next Door Solutions to Domestic Violence
 Prediabetes Initiative
 Racing Hearts
 South Asian Heart Center
 West Valley Community Services – CARE
 West Valley Community Services – CARE Senior Services

Dear Community Members,

As I exit my role as chairman of the El Camino Hospital Board of Directors, I am proud of all our organization has achieved during the last five years of my tenure. It has been especially rewarding to witness the impact our Community Benefit Program has had on the overall health of our community.



Over the past five years, the hospital's Community Benefit expenditures have grown steadily from \$50.5 million in FY13 to \$64.4 million in FY17 — a 28 percent increase. During that time, our Community Benefit grants and sponsorships increased from \$1.45 million in FY13 to nearly \$3.1 million in FY17 — a 111 percent increase. This increase is a clear reflection of the Board's dedication to improving the health of everyone in our community, especially those most in need, and I have no doubt the Board will continue to support such worthy programs.

We channeled funds strategically to target specific problems and populations at risk, adjusting our priorities for 2017 Community Benefit funds based on the 2016 Community Health Needs Assessment. The new health priority areas are Healthy Body, Healthy Mind, and Healthy Community.

The range of critical unmet needs we are addressing is impressive. For example, various programs we partnered with confront four very different issues facing senior citizens: depression, transportation barriers, falls, and access to vital services. School-based health programs — including school nurses, mental health counselors, and physical activity programs — have resulted in students getting glasses, learning how to manage conditions such as asthma and anxiety, and promoting healthier school climates.

It has been an honor and a pleasure to serve on the El Camino Hospital Board of Directors. I will always be grateful for this opportunity, and I am delighted with the progress we have made to date. I welcome the new chairman, Lanhee J. Chen, JD, PhD, and I know that he and the rest of the Board will continue these good works to support our unique community.

Sincerely,

Neal H. Cohen, MD, MPH, MS
 FY17 Chair, Board of Directors, El Camino Hospital



Tackling Chronic Disease and Preventable Illness

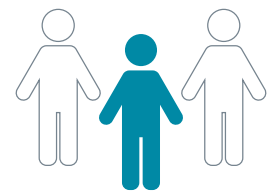


Our approach to community health begins with a strong commitment to preventing problems before they occur. We assess and address emerging health issues and then support programs that equip residents with information and tools they need to be and stay well.

Diabetes is an epidemic nationally and in our area

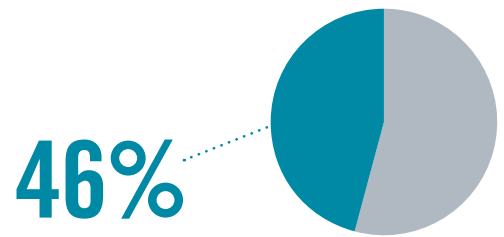
Studies show that eliminating risk factors for chronic disease could prevent 80 percent of heart disease, stroke, and type 2 diabetes, and 40 percent of cancer cases. El Camino Hospital Community Benefit is addressing prediabetes by funding programs that help people manage their blood sugar and reduce their risk of developing type 2 diabetes.

TYPE 2 DIABETES, once known as adult-onset or noninsulin-dependent diabetes, is a chronic condition that affects the way your body metabolizes sugar (glucose), your body's important source of fuel.



1 OUT OF 3

Americans has prediabetes



of adults in SANTA CLARA COUNTY have prediabetes or undiagnosed diabetes

11% OF LATINOS

in Santa Clara County have type 2 diabetes

compared to just 8% of the general population

We're fighting back with programs that create awareness, provide screenings, and help prevent and manage diabetes

Spearheaded by El Camino Hospital, **Challenge Diabetes Program (CDP)** is a partnership offering clients at **Community Services Agency Mountain View, Sunnyvale Community Services,** and **West Valley Community Services** the opportunity to learn about their risk for prediabetes and diabetes. Free on-site screenings help identify individuals who can benefit from CDP's multilingual workshops on healthy lifestyles, physical activity classes, and access to nutritious foods provided by the Second Harvest Food Bank.

Prediabetic and diabetic participants in the **Down with Diabetes Program** at **Gardner Family Health Network** met with physicians and specially trained dietitians to integrate proven exercise and diet recommendations with the aim of managing their condition.

The **Prediabetes Initiative** was a culturally relevant radio and television social marketing initiative to encourage at-risk community members to get screened using the promotores (community health worker) model.

GreatNonprofits' innovative texting program gathered insights from underserved community members as research to help plan for targeted diabetes prevention programs promoting behavior change.



Our support drove key strategies to prevent diabetes



Improve Disease Management Skills



Lose Weight



Lower A1c

Test that identifies average blood sugar rates over a few months

We placed AEDs in the community to help reduce deaths from heart attack

A strategically located automated external defibrillator (AED) delivers help in a hurry when a heart attack strikes. Offered in partnership with the Santa Clara County Public Health Department and the Santa Clara County Board of Supervisors, **Racing Hearts** raised awareness of AEDs and placed them in strategic locations around the community, such as schools and county shelters.



92% of local schools now have AEDs –

Santa Clara County has the largest deployment of AEDs in public schools in California



We delivered culturally focused care to groups with specific health risks

Our local communities are increasingly diverse and so are the health problems that affect them. We supported key programs that identify and address serious health disparities affecting specific ethnicities.

The **Chinese Health Initiative** hosted lectures, workshops, and screenings focusing on hypertension, prediabetes, and other health issues. The initiative also referred patients to physicians who are fluent in Mandarin or Cantonese. We supported the organization's efforts to educate the Chinese community about common risks. For example, most people with hypertension (high blood pressure) have no symptoms, yet left untreated, it can damage blood vessels and the heart.

El Camino Hospital's **South Asian Heart Center (SAHC)** is dedicated to halting the twin epidemics of heart disease and diabetes in people of South Asian descent. This year, our support helped the center launch STOP-D, a diabetes prevention program for participants diagnosed with prediabetes. In an effort to get the word out on this population's unique risk factors, SAHC conducted free screenings at large community health fairs all over the South Bay.

We provided the community with vetted, evidence-based medical information

Researching health conditions on the internet can lead to misinformation and confusion. The **El Camino Hospital Health Library & Resource Center** provided free access to accurate health information, along with assistance from friendly medical librarians to help guide or conduct targeted searches. Our support helped patrons communicate effectively with providers, make more informed decisions, and potentially avoid adverse events.



Nurturing Children at School

Many underserved children in our community don't have a regular pediatrician to oversee their development. Vision, hearing, and dental issues may go undiagnosed. Obesity and inactivity, if not addressed, can also lead to lifelong health issues.

We're funding school nurses to attend to children's vital needs

School Nurses and On-Site Programs

The School Nurse Program in **Cupertino Union School District** targeted schools with very diverse populations and a high percentage of English learners. El Camino Hospital Community Benefit funding provided:

- On-site dental screenings for kindergartners
- Hearing tests
- Staff training for severe allergies, anaphylaxis, and EpiPen® usage
- Promotion of the **GoNoodle** program to alert staff about its benefits
- **Vision to Learn** eye exams and free glasses for students at low-income schools



Vision to Learn's mobile van offered free eye exams and glasses at Blackford Elementary School in San Jose, part of the Campbell Union School District.

School nurses at **Campbell Union School District** served nearly 4,000 students with El Camino Hospital Community Benefit funding, which provided:

- Follow-up with students who failed health screenings to ensure ongoing care
- Case management for students with chronic diseases and the medically fragile
- Bicycle safety programs for students, and CPR and first-aid training for staff
- Fluoride varnish program
- Families with connection to insurance enrollment
- **Vision to Learn** eye exams and glasses



Vision Screenings



Hearing Tests



CPR Training



Allergy Training



Bicycle Safety



Fluoride Program

"Since my daughter started wearing her new glasses, I have noticed newfound confidence. This brings me so much joy and also means a brighter future for her."

Parent of student who received free eye exam and glasses from Vision to Learn



97% of teachers said **PLAYWORKS** increased student cooperation on the playground and in the classroom



Poor nutrition and inadequate exercise harm children's health

We're encouraging children to eat right and move more, which improves their focus

Exercise and Nutrition to Grow Up Healthy

Playworks helped children in the **Campbell Union School District** get safe, active play at recess and throughout the school day. The program also decreased bullying by teaching conflict resolution on the playground.

The **5210 Health Awareness Program** is an easy mnemonic device for youngsters to remember what to do — and not do — every day. Eat **five** or more fruits and vegetables, spend **two** hours or less on recreational screen time, be active for at least **one** hour, and drink **zero** sweetened beverages. This program served 8,800 elementary and middle schoolers.

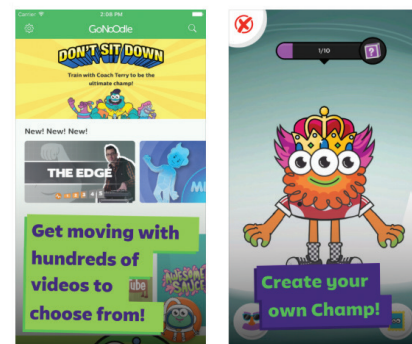
Community Benefit funds made it possible for the **Cristo Rey Network** to conduct daily physical fitness sessions during school hours for the many students who have unhealthy diets and struggle with obesity.

BAWSI (Bay Area Women's Sports Initiative) helped elementary school girls improve their fitness and overall confidence. Female college athletes coached the students, serving as positive role models.

"GoNoodle helps my kids through guided meditation to reconnect to their minds. The content-driven activities help to provide an additional avenue for teaching."

1st grade teacher, Anderson Elementary, Moreland School District

GoNoodle, in 183 local schools thanks to Community Benefit funds, is a suite of movement games and videos designed to bring mindfulness and physical activity breaks into elementary classrooms. The games were built on research showing short bursts of physical activity positively impacts academic achievement, cognitive skills, and behavior, as well as overall health. Kids and teachers love GoNoodle.



GoNoodle App Takes Off!

The debut of the GoNoodle Kids app was impressive! Within the first couple of weeks, it was ranked the #1 free app in both the Kids and Education categories and, most excitingly, it was named overall #1 free iPad app in the Apple Store! This is an exciting step in bringing GoNoodle from the classroom to the living room.



The average **delay** between onset of **MENTAL ILLNESS** symptoms and intervention among youth is **8–10 YEARS**



Vulnerable children and teens lack the counseling and support they need

We're funding counselors for students in our schools

School-based Counseling

Cliques. Bullying. Family problems. Middle school and high school — and even elementary school — can be challenging times. Our school-based mental health program partners address a critical unmet need in our community. At 16 schools in the **Cupertino Union School District**, **Santa Clara Unified School District**, and the **Campbell Union High School District** (through **Uplift Family Services**), students and school communities had access to:

- Individual and group counseling
- Crisis intervention
- Case management
- Support and education for parents and teachers

We also supported social skills development among elementary school children through **Almaden Valley Counseling Service**. This program provided group sessions, in English and Spanish, to children with identified emotional or behavioral challenges at 16 schools in three school districts: **San Jose Unified, Union, and Cambrian**.

HELPING TROUBLED YOUTH GET BACK ON TRACK

A 15-year-old girl in the **Campbell Union High School District** was experiencing daily panic attacks. Her anxiety caused her to leave class crying, breathing quickly, and feeling that her heart was beating too fast. A school-based counselor from **Uplift Family Services** worked with her to build coping and grounding skills to focus on the present moment. Cognitive Behavior Therapy also helped the teen reduce negative self-talk. By the end of the semester, she was able to stay in class most days by using her coping skills, and challenging negative self-talk to reduce her anxiety. Ultimately, the student was able to end the year with academic success.

Supporting Youth Outside of School



Many children and teens in our area do not receive the healthcare and special attention they need to be well, stay well, and do well. Community Benefit funding supports key programs that bring young people and their parents information and services to help them be at their best.

Community Benefit funds helped parents and kids alike to smile and breathe easier

The Superior Court of the County of Santa Clara gave foster youth new smiles and a confidence boost, thanks to its Foster Care Orthodontic Program and assistance from Community Benefit funds.

Underserved young families learned to oversee their child's physical and dental health through Santa Clara County Office of Education – Early Head Start. Families got help finding insurance and medical homes for their children.

Through asthma education, on-site assessments for respiratory hazards, and even free respiratory therapy equipment, Breathe California helped young asthma sufferers stay safe.

- > 500+ had lung health screenings
- > 400 received asthma education
- > 100 got FREE asthma devices



NEW SMILES



14%
of children in
Santa Clara County
HAVE ASTHMA

Helping Older Adults Live Fuller Lives

Seniors are becoming a larger portion of our population, and they face unique health risks. Our grant programs are working to remove the barriers that make it hard for many older community members to remain healthy, independent, and connected to others.

We're taking on issues like depression, loneliness, and fear of falling to help seniors get more out of life

Falls Prevention of Santa Clara County provided evidence-based classes that helped seniors build strength, reduce fear of falling, promote balance, and avoid falls. This program also raised awareness about falls prevention throughout the county.

Low-income and homeless seniors received assistance with self-sufficiency, case management, health and financial education, benefits clinics, and emergency assistance through the West Valley Community Services Senior CARE Program.

Working with the Palo Alto Medical Foundation and other local partners, linkAges' community-based multigenerational network arranged friendly home visits for isolated homebound seniors.



At-risk seniors are getting help with depression and isolation through Asian Americans for Community Involvement's (AACI) Healthy IDEAS (Identifying Depression, Empowering Activities for Seniors) program. This culturally sensitive, evidence-based program offered bilingual depression screening and education.

24% OF ASIAN AMERICAN SENIORS REPORTED ISOLATION as a serious concern

as compared to 11% of seniors in the general population



We're giving caregivers some well-deserved quality time

Chronic stress and isolation put caregivers at risk for a variety of health conditions. Meet and Move organized monthly lectures on topics relevant to caregivers, and hosted weekly walks to help them get out of the house and make new friends.

Caring for Our Community's Most Vulnerable



"The nutrition and exercise recommendations I received as part of the Down with Diabetes program are helping me achieve my goal to reduce my risk of diabetes. I have lost 10 pounds in four months. I learned that healthy eating is a way of life, and not a restricted diet."

Patient, Gardner Family Health Network

Where do you go for care if you're uninsured? How do you get coverage? What if your family is food- or housing-insecure? We offer guidance for navigating social benefits and accessing essential resources.

"If El Camino Hospital is willing to provide such a great service to so many students in the area, it really shows they care for the well-being and health of our children."

2nd grade teacher, Matsumoto Elementary, Evergreen Elementary School District, where El Camino Hospital funds GoNoodle

"We use GoNoodle to improve transitions into subjects like math — the students are more focused and ready to learn when they do the program's cross-lateral activities and brain-ercise activities."

5th grade teacher, Daves Elementary, Los Gatos Union School District, where El Camino Hospital funds GoNoodle

We're working hard to ensure vulnerable populations don't miss out on valuable resources

Medical Respite provided services for homeless patients who needed support after leaving the hospital, including medical care, counseling, help with housing, and, most importantly, a place to rest and recover.

West Valley Community Services CARE offered a lifeline to vulnerable families by providing case management, food pantry access, help with public benefit applications, and other basic needs to promote self-sufficiency.

The damage caused by domestic violence isn't just physical: It includes depression, anxiety, PTSD, memory loss, personality changes, and suicidal ideation. Children often suffer emotional consequences, even if they are not directly abused themselves. **Next Door Solutions to Domestic Violence** provided counseling, safety planning, and shelter for victims and their children.

Nutrition is an important issue for cancer patients, both because they need to maintain their strength and because chemo can make certain foods taste unpleasant. **Cancer CAREpoint** provided nutrition classes for cancer survivors, their families, and caregivers.

Peninsula Healthcare Connection provided homeless or housing-insecure community members with psychiatric treatment, medication management, and social work support.

Community Benefit funds enabled **Momentum for Mental Health** to provide critical psychiatric evaluations, medication management, and counseling to uninsured community members.

Peninsula Healthcare Connection and **Momentum for Mental Health** did critical work to help vulnerable people with mental health conditions achieve and maintain stability.

"Since we are a Title I school, we have a higher percentage of students who are socioeconomically disadvantaged and English learners. Having a school nurse benefits our students in many ways. This year, with our school nurse's hard work, we were one of the first schools in the county to pilot a Fluoride Varnish and Dental Screening Program. We are grateful to El Camino Hospital for funding nursing services to our students and families in need."

Anne Ajlouni, Vice Principal of Lynhaven Elementary School in San Jose, Campbell Union School District

"We had so many kids who for so long needed glasses. Vision to Learn sees them, gets them the exam, gets them glasses, even a referral for additional care, as needed. **This program is a godsend because these are kids that we couldn't help.**"

Nurse, Campbell Union School District, where Vision to Learn provided services

"If I didn't have Next Door Solutions in my life, I think I wouldn't have made it. A year has passed since I ended my domestic violence relationship. My two sons and I are survivors of domestic violence. Truly, I can say that with no emotion NOW. Thanks for always being my safe zone."

Client, Next Door Solutions to Domestic Violence

Vital Support Beyond Community Benefit Grants

We're finding ways to make care better, more affordable, and more accessible

This report focuses primarily on the work our grants partners do to make a positive impact on individuals, families, and the greater community. El Camino Hospital also provides substantial financial support through other channels, including subsidizing professional training and research, and providing financial assistance to those who cannot afford to pay. Here are a few examples.



Financial Assistance

Under the hospital's financial assistance (Charity Care) guidelines, qualifying individuals who can't pay for medically necessary hospital services are eligible for a fee reduction. Some may qualify for elimination of their hospital bill. This policy applies to both inpatients and outpatients whose family income is up to 399 percent of the federal poverty level.



Clinical Research

Participating in clinical research allows us to bring the latest advances in medical science to our patients. Community Benefit support enabled the Clinical Research Program to provide a robust service that would not typically be available in a community hospital setting.

The Taft Center for Clinical Research is currently conducting trials in the fields of oncology, cardiology, pulmonology, gastroenterology, and robotic technologies.



Healthcare Professionals Education

El Camino Hospital provided 441 trainee positions in respiratory care services, nursing, clinical laboratory, behavioral health, and other specialties. This provides new health workers with valuable experience and ensures our community has highly trained healthcare professionals. The hospital also supports interns, practicum students, and postdoctoral fellows in mental health services.

"El Camino Hospital is deeply committed to research and providing access to leading-edge therapies that will ultimately advance healthcare and help to improve community health."

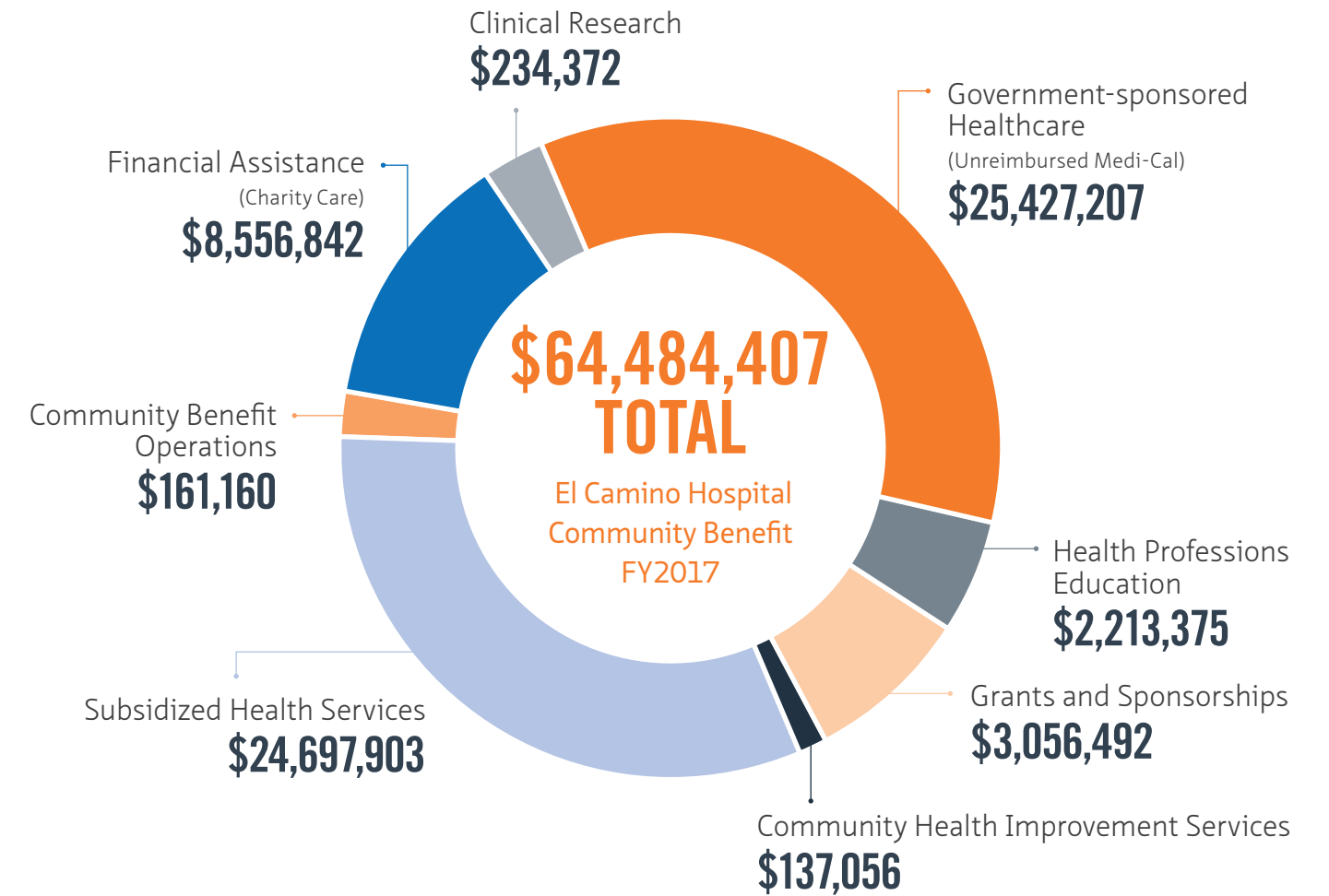
Ryan Schroeder
Director, Taft Center for Clinical Research

"The students are often amazed at how many things respiratory therapists can do, as well as the varied directions that a career in respiratory care can provide. They invigorate the staff to keep pace with national trends in the industry."

Jolie M. Fournet, MBA, RRT-NPS,
Director, Respiratory Care Services

"El Camino Hospital strives to provide excellent patient care. We also know that much of healthcare happens outside of hospitals. That's why our Community Benefit program provided \$64.4 million this year to address unmet health needs, including nearly \$3.1 million in grants and sponsorships. Whether it's providing nurses and counselors in schools, safe housing for domestic violence victims, or care after hospitalization for homeless individuals, our steadfast commitments make the entire community healthier."

Barbara Avery, Director, Community Benefit, El Camino Hospital



In addition, total uncompensated Medicare for FY2017 was \$105,413,699

El Camino Hospital Fiscal Year 2017 Sponsorships Recipients

- | | |
|--|--|
| AACI (Asian Americans for Community Involvement) | Next Door Solutions to Domestic Violence |
| Abilities United | PACT (People Acting in Community Together) |
| Aging Services Collaborative | Planned Parenthood Mar Monte |
| Alum Rock Counseling Center | Preeclampsia Foundation |
| Alzheimer's Association | Project Cornerstone |
| American Diabetes Association | Saratoga Area Senior Coordinating Council |
| Bay Area Older Adults | Silicon Valley Council of Nonprofits |
| Congregation Shir Hadash Health Fair | Silicon Valley Leadership Group – Turkey Trot and Heart & Sole Run |
| Cystic Fibrosis Foundation | Strides for Life Colon Cancer |
| Indian Health Center | Synchronized Swimming Athletes with Disabilities |
| Los Gatos Lions Club Mental Health Event | Uplift Family Services |
| Lung Cancer Foundation | West Valley Community Services |
| NAMI (National Alliance on Mental Illness) | YWCA Silicon Valley |

Community Health Is a Team Effort

Community Benefit Advisory Council Members

Barbara Avery**

Chair, Director, Community Benefit, El Camino Hospital

Cynthia Bojorquez*

Library and Community Services Director, City of Sunnyvale

Bonnie Broderick, RD, MPH**

Director, Chronic Disease and Injury Prevention, Santa Clara County Public Health Department

Cecile Currier,** Vice President, Corporate and Community Health Services, El Camino Hospital

Rhonda Farber, PhD**

Past Superintendent, Campbell Union High School District

Laura Macias**

Past Mayor/Councilmember, City of Mountain View

Kathi McShane*

Senior Pastor, Los Altos United Methodist Church

Naomi N. Nakano-Matsumoto, LCSW,** Assistant Director, Social Sector Ethics, Markkula Center for Applied Ethics, Santa Clara University

James Ramoni, LCSW,* Director, Department of Aging and Adult Services, Santa Clara County

Anil Singhal, MD,**

Physician, Past El Camino Hospital Foundation Board of Directors

Paul Taylor*

Past CEO of Momentum for Mental Health

Marilyn Winkleby, PhD, MPH,** Professor of Medicine and Director of the Office of Community Health, Stanford University School of Medicine

*Member of the El Camino Hospital Community Benefit Advisory Council

**Member of both the El Camino Hospital and the El Camino Healthcare District Community Benefit Advisory Council

Additional El Camino Hospital Information

The 2017 Community Benefit Plan, 2017 Community Benefit Report, and Community Health Needs Assessment are available at www.elcaminohospital.org/communitybenefit

Additional El Camino Healthcare District Information

The 2017 El Camino Healthcare District Community Benefit Plan and 2017 Community Benefit Report are available at www.elcaminohealthcaredistrict.org/communitybenefit

Community Benefit Advisory Council Board Liaisons

Peter C. Fung, MD, MS, FACP, FAAN, FAHA

El Camino Hospital Board of Directors, Secretary/Treasurer, CBAC Liaison
El Camino Healthcare District Board of Directors, Chair

Julia E. Miller

El Camino Hospital Board of Directors, Member
El Camino Healthcare District Board of Directors, Secretary/Treasurer, CBAC Liaison

Community Benefit Staff

Cecile Currier, Vice President, Corporate and Community Health Services, El Camino Hospital

Barbara Avery, Director, Community Benefit

Anne Boyd Rabkin, Senior Community Benefit Specialist

Sharan Johal, Senior Community Benefit Specialist

Laurie Withers, Sponsorship Coordinator

El Camino Healthcare District Board of Directors

Peter C. Fung, MD, MS, FACP, FAAN, FAHA, FY17 Chair

Dennis W. Chiu, JD, FY17 Vice Chair

Julia E. Miller, FY17 Secretary/Treasurer

David Reeder, MS

John L. Zoglin

El Camino Hospital Board of Directors

Neal H. Cohen, MD, MPH, MS, FY17 Chair

Dennis W. Chiu, JD, FY17 Vice Chair

Peter C. Fung, MD, MS, FACP, FAAN, FAHA, FY17 Secretary/Treasurer

Lanhee J. Chen, JD, PhD

Jeffrey M. Davis, MD

Julia E. Miller

David Reeder, MS

John L. Zoglin

Don Sibery, Interim CEO, El Camino Hospital

Community Benefit Fiscal Year 2017 Grant Program Recipient Contact Information†

5210 Health Awareness Program Palo Alto Medical Foundation 701 E. El Camino Real Mountain View, CA 94040	Acknowledge Alliance 2483 Old Middlefield Way, Suite 208 Mountain View, CA 94043	Almaden Valley Counseling (AVCS) 6529 Crown Blvd., Suite D San Jose, CA 95120
Alzheimer's Association 2290 N. First Street, Suite 101 San Jose, CA 95131	American Heart Association Silicon Valley One Almaden Boulevard, Suite 500 San Jose, CA 95113	Asian Americans for Community Involvement (AACI) 2400 Moorpark Avenue, Suite 300 San Jose, CA 95128
BAWSI (Bay Area Women's Sports Initiative) 1922 The Alameda, Suite 420 San Jose, CA 95126	Breathe California 1469 Park Avenue San Jose, CA 95126	Campbell Union School District 155 N. Third Street Campbell, CA 95008
Cancer CAREpoint 2505 Samaritan Drive, Suite 402 San Jose, CA 95124	CHAC (Community Health Awareness Council) 590 W. El Camino Real Mountain View, CA 94040	Chinese Health Initiative 2500 Grant Road Mountain View, CA 94040
Community Services Agency Mountain View 204 Stierlin Road Mountain View, CA 94043	Cristo Rey Network 1390 Five Wounds Lane San Jose, CA 95116	Cupertino Union School District 10301 Vista Drive Cupertino, CA 95014-2091
Day Worker Center of Mountain View 113 Escuela Avenue Mountain View, CA 94040	Eating Disorders Resource Center 15891 Los Gatos-Almaden Road Los Gatos, CA 95032	Falls Prevention of Santa Clara County One Washington Square San Jose, CA 95192-0257
Family & Children Services of Silicon Valley 375 Cambridge Avenue Palo Alto, CA 94306	Farewell to Falls 300 Pasteur Drive MC 5898 Stanford, CA 94305	Fresh Approach 5060 Commercial Circle, Suite C Concord, CA 94520
Friends for Youth 1741 Broadway Redwood City, CA 94063	Gardner Family Health Network 160 E. Virginia Street San Jose, CA 95112	GoNoodle 209 Tenth Avenue S., Suite 350 Nashville, TN 37203
Great Nonprofits 330 Twin Dolphin Drive, Suite 131 Redwood City, CA 94065	Health Library & Resource Center, Mountain View – El Camino Hospital 2500 Grant Road Mountain View, CA 94040	Health Mobile 1659 Scott Blvd., #4 Santa Clara, CA 95050
Healthier Kids Foundation 4010 Moorpark Avenue, Suite 118 San Jose, CA 95117	Hope's Corner 748 Mercy Street Mountain View, CA 94041	International Association for Human Values (IAHV) 495 Blossom Hill Road San Jose, CA 95123
Law Foundation of Silicon Valley 152 N. Third Street, 3rd Floor San Jose, CA 95112	Living Classroom P.O. Box 3501 Los Altos, CA 94024	Los Altos School District 201 Covington Road Los Altos, CA 94024
Lucile Packard Foundation for Children's Health 400 Hamilton Avenue, Suite 340 Palo Alto, CA 94301	linkAges 2350 W. El Camino Real Mountain View, CA 94040	Maitri P.O. Box 697 Santa Clara, CA 95052
Matter of Balance 300 Pasteur Drive MC 5898 Stanford, CA 94305	MayView Community Health Center 270 Grant Avenue Palo Alto, CA 94306	Medical Respite 1215 K Street, Suite 800 Sacramento, CA 95814
Meet and Move 2350 W. El Camino Real Mountain View, CA 94040	Momentum for Mental Health 438 N. White Road San Jose, CA 95127	Mountain View Los Altos Union High School District 1299 Bryant Avenue Mountain View, CA 94040
Mountain View Police Department Youth Services Unit 1000 Villa Street Mountain View, CA 94041	Mountain View Whisman School District 750-A San Pierre Way Mountain View, CA 94043	National Alliance on Mental Illness (NAMI), Santa Clara County 1150 S. Bascom Avenue, Suite 24 San Jose, CA 95128
New Directions 33 Encina Avenue, Suite 103 Palo Alto, CA 94301	Next Door Solutions to Domestic Violence 234 E. Gish Road, Suite 200 San Jose, CA 95112	Pathways Home Care and Hospice 585 N. Mary Avenue Sunnyvale, CA 94085
Peninsula HealthCare Connection 33 Encina Avenue, Suite 103 Palo Alto, CA 94301	Playworks 2155 S. Bascom Avenue, Suite 201 Campbell, CA 95008	Prediabetes Initiative 1290 B Street, Suite 201 Hayward, CA 94541
Prevention Partnership International 15040 Encina Court Saratoga, CA 95070	Racing Hearts info@racinghearts.org 650-308-4183	Rebuilding Together 841 Kaynne Street Redwood City, CA 94063
RoadRunners Mountain View – El Camino Hospital 2500 Grant Road Mountain View, CA 94040	Santa Clara County Office of Education 1290 Ridder Park Drive MC 225 San Jose, CA 95131-2304	Santa Clara Unified School District 1889 Lawrence Road Santa Clara, CA 95052
Seniors Council 234 Santa Cruz Avenue Aptos, CA 95003	South Asian Heart Center 2500 Grant Road Mountain View, CA 94040	Superior Court of California, Santa Clara County 191 N. First Street San Jose, CA 95113
Sunnyvale Community Services 725 Kifer Road Sunnyvale, CA 94086	Sunnyvale School District 819 W. Iowa Avenue Sunnyvale, CA 94086	Uplift Family Services 251 Llewellyn Avenue Campbell, CA 95008
Valley Health Center Sunnyvale 2325 Enborg Lane, Suite 320 San Jose, CA 95128	Vision to Learn 11611 San Vicente Blvd., #500 Los Angeles, CA 90049	West Valley Community Services 10104 Vista Drive Cupertino, CA 95014
Working Partnerships USA 2102 Almaden Road, Suite 112 San Jose, CA 95125	YMCA Silicon Valley 2500 Grant Road Mountain View, CA 94040	

† Some organizations have offices outside of the El Camino Hospital service area or the El Camino Healthcare District boundaries; however, all grants awarded support programs providing services within these geographic areas.



EL CAMINO HEALTHCARE DISTRICT



El Camino Hospital
THE HOSPITAL OF SILICON VALLEY

B-0303_CommunityBenefit Sept17 1500

Printed on recycled paper